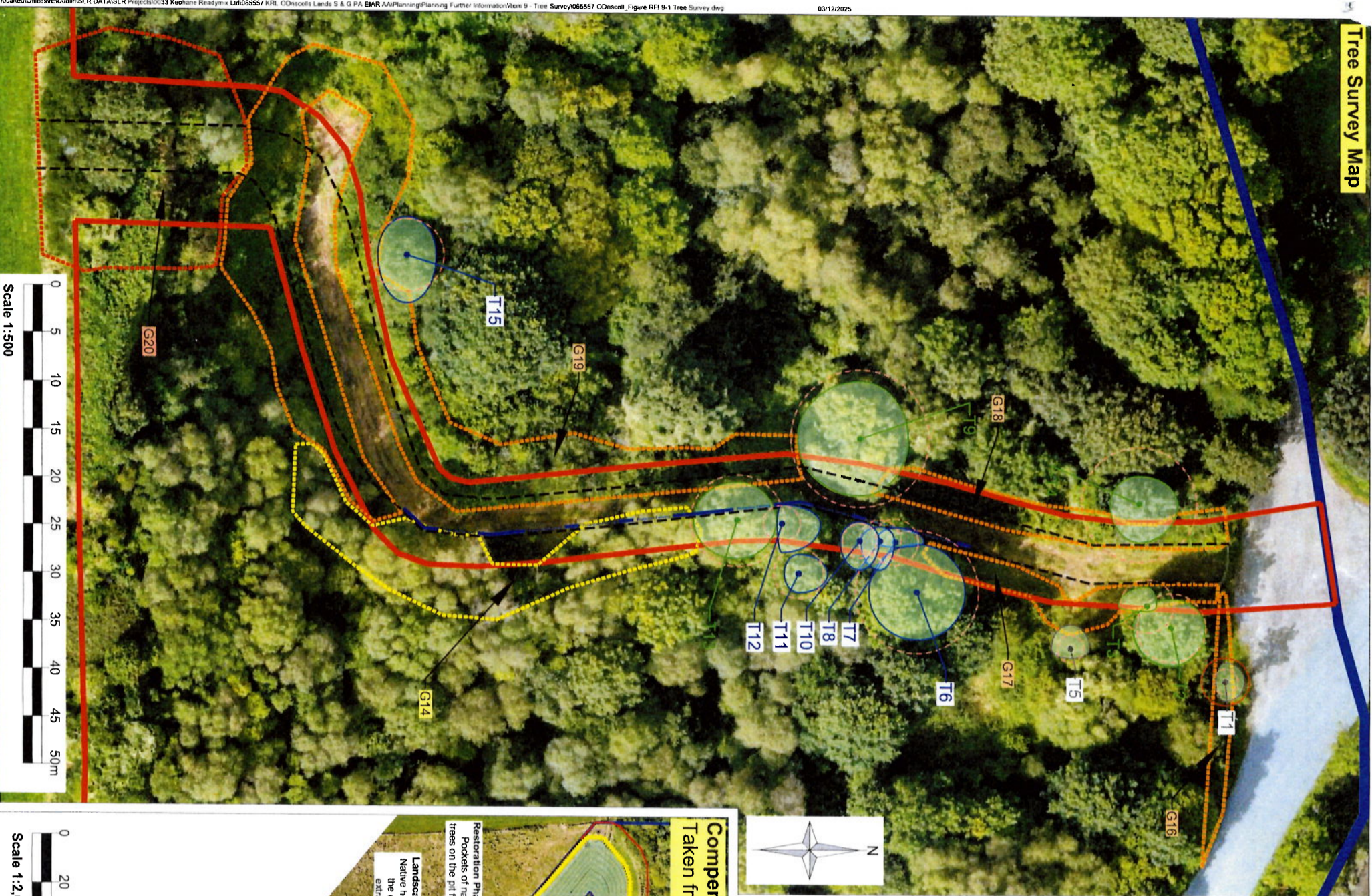


Tree Survey Map



Compensatory Planting Details:
Taken from Figure 2-5 of the EIAR - Landscape and Restoration Plan

NATIVE HEDGE MIX
4 plants/m (ca. 660 lin.m. in total = 2,600 plants)

No.	Plant Name	Common Name	Height (cm)	Age/Pot Size	%
Transplants					
130	Alnus glutinosa	Common alder	60-90	1+1	05
390	Corylus avellana	Hazel	60-90	1+0	15
780	Crataegus monogyna	Hawthorn	60-90	1+1	30
260	Ilex aquifolium	Holly	60-80	2L	10
520	Prunus spinosa	Blackthorn	60-90	1+0	20
390	Rosa canina	Dog rose	40-60	1+1	15
130	Sambucus nigra	Elder	60-90	1+1	05

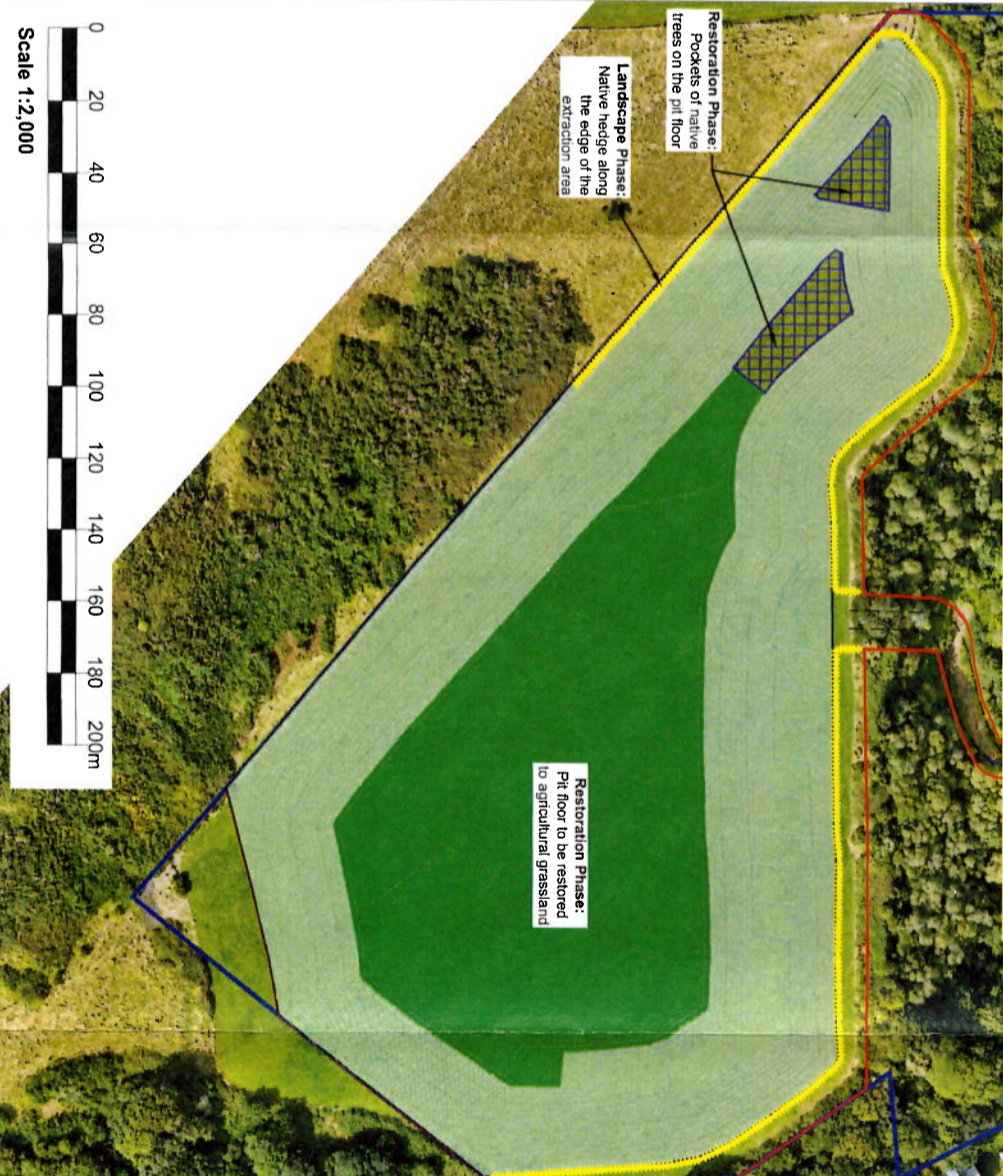
Native Tree Mix

Planted at 1.5m centres (ca. 800m² in total = 350 plants)

No.	Plant Name	Common Name	Height (cm)	Age/Pot Size	%
Transplants					
20	Alnus glutinosa	Common Alder	60-90	1+1	05
50	Corylus avellana	Hazel	60-90	1+0	15
35	Crataegus monogyna	Hawthorn	60-90	1+1	10
50	Ilex aquifolium	Holly	60-80	2L	15
35	Prunus spinosa	Blackthorn	60-90	1+0	10
20	Quercus robur	Pedunculale oak	60-90	1+1	05
35	Rosa canina	Dog rose	40-60	1+1	10
35	Salix cinerea	Sally	60-120	0+1	10
35	Sambucus nigra	Elder	60-90	1+1	10
35	Sorbus aucuparia	Rowan	60-90	1+1	10



Compensatory Planting Map:
Taken from Figure 2-5 of the EIAR - Landscape and Restoration Plan



Notes:
1. Aerial photo by ASW Ireland, dated August 2024.

2. Please refer to the RFI response document (Item 9) for more detail on the tree survey, which is based on BS 5837:2012, including individual trees and tree groups surveyed, including their life stage, species and condition, as well as further information on the proposed tree protection and management measures.

Legend:

- Land Interest Boundary
- Planning Application Boundary
- Approximate position of widened access track (shown at 4 m width)

Tree Survey Map

- T1 (Category A)
Tree of high quality and value
- T1 (Category B)
Tree of moderate quality and value
- T1 (Category C)
Tree of low quality and value
- Tree Groups (G)
- Root Protection Area (RPA)
- Tree Protection Fencing (TPF)
Sturdy 1.2 m tall post & rail or post & wire fence ca. 1 m from the edge of the existing track to prevent damage to the tree stems by passing vehicles.
Note: track to be widened to the west in this location

Tree to be Removed
AN COIMISIUN PLEANÁLA

TR DATED
16/05/2025
50-0890-26
ACP

SLR
S.L.R CONSULTING IRELAND
7 DUNDEEM BUSINESS PARK
DUBLIN 7
IRELAND
D14 N2V7

www.slrconsulting.com

FINAL

Client
KEOHANE READYMIX LTD.

Project
**SAND & GRAVEL PIT
KNOCKROE, BANDON, CO. CORK**

Drawing Title
**RFI Item 9:
Tree Survey and Compensatory Planting Plan**

Scale	1:500 & 1:2,000	SLR Project No	065557.00001
Designed	AM	Drawn	TP
Checked	AM	Checked	TP
Date	11/25	Date	11/25
Authorised	TP	Date	11/25
Drawing Number	FIGURE RFI 9-1	Rev	0